



Oryzaephilus surinamensis
(Saw-Toothed Grain Beetle)



Sitophilus granarius
(Granary Weevil)



Rhizopertha dominica
(Lesser Grain Borer)



Tribolium castaneum
(Red Flour Beetle)



Sitophilus zeamais
(Maize Weevil)



Sitophilus oryzae
(Rice Weevil)



Tribolium confusum
(Confused Grain Beetle)



Corcyra cephalonica
(Rice Moth)



Prostephanus truncatus
(Larger Grain Borer)



Ephestia kuehniella
(Mediterranean Flour Moth)



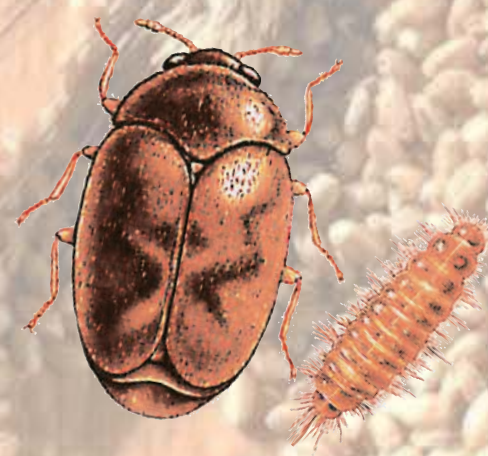
Lasioderma serricorne
(Cigarette Beetle)



Tenebroides mauritanicus
(Cadelle Beetle)



Gnathocerus cornutus
(Broad-Horned Flour Beetle)



Trogoderma granarium
(Khapra Beetle)



Cryptolestes ferrugineus
(Rusty Grain Beetle)



Sitotroga cerealella
(Angoumois Grain Moth)



Plodia interpunctella
(Indian Meal Moth)



Acanthoscelides obtectus
(Common Bean Weevil)



Callosobruchus chinensis
(Cowpea Beetle)

The grain protectant



Bayer Environmental Science
A Business Operation of Bayer CropScience

K-Obiol®